



# GLF

CONSTRUCTION CORPORATION

**Brickell Bay View Center**  
80 South West 8th Street  
Suite 2201  
Miami, Florida 33130 U.S.A.

**[www.glfusa.com](http://www.glfusa.com)**



# GLF CONSTRUCTION BUILDING A TRADITION FOR OVER 100 YEARS

1 //

**Seabreeze Segmental Bridge**  
Daytona Beach, FL

**IN DOING BUSINESS WITH** GLF CONSTRUCTION CORPORATION OUR CLIENTS BENEFIT FROM OVER 100-YEAR TRADITION OF CONSTRUCTION EXCELLENCE BUILT UPON PROJECTS IN OVER 50 COUNTRIES WORLDWIDE.



## 2 // Blair Stone Road Extension

Tallahassee, FL

## 3 // Seabreeze Segmental Bridge

Daytona Beach, FL



In doing business with GLF Construction Corporation our clients benefit from over 100-year tradition of construction excellence built upon projects in over 50 countries worldwide. GLF is an international engineering and construction company specializing in the following sectors: transportation, marine works, major structures, general contracting, design-build and historical renovation projects.

Since the company's inception in 1905 safety, quality and innovation have been hallmarks of the GLF philosophy. At GLF we pride ourselves on a long history of projects delivered on time, to the highest quality and within budget, even under the most adverse conditions.

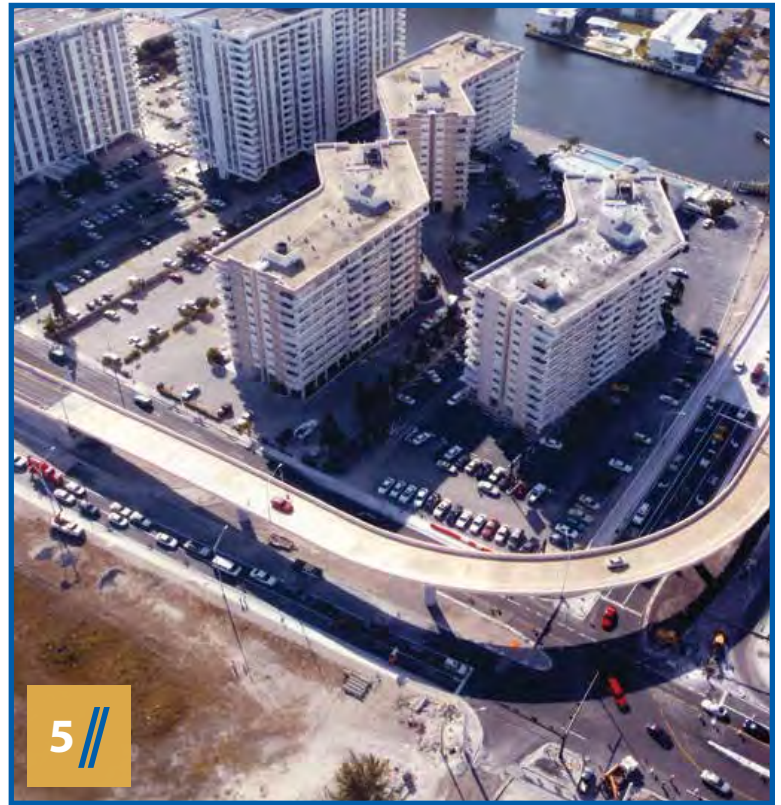
GLF is constantly developing new techniques and contributing new ideas to the construction industry. The GLF "Team" has acquired years of knowledge and experience in the construction industry. By combining new ideas with the latest techniques and proven experience GLF's clients benefit from the best of the new and the old.

Our team takes a proactive approach to working with our clients. A partnering relationship is used on many of our projects. In addition, GLF's concerns for safety, the environment and public awareness are at the forefront of our managements' execution of the project.



**4 // Seabreeze Segmental Bridge**  
Daytona Beach, FL

**5 // Hallandale Beach Blvd Flyover Bridge**  
Hallandale Beach, FL



GLF Construction Corporation, with corporate headquarters in Miami, Florida, was formed to provide a full range of services in the United States, Canada, Central & South America, and the Caribbean.

Services provided by GLF Construction Corporation Miami include:

- **Structures & Bridges**
- **Heavy Foundations**
- **Marine Works and Ports**
- **Light Rail Systems**
- **Design-Build**
- **Structural & Historical Renovation**
- **General Contracting**

With more than \$3 Billion in projects completed within the last 5 years, GLF offers clients a keen understanding of the total construction environment.

GLF Construction Corporation recognizes that as the company continues to be successful in the next century we will need to rely on the strong foundation built on the first century of business, but just as importantly, is the next generation of GLF Team members for they are the company's most important assets.



# STRUCTURES & BRIDGES

1

I-595 Corridor Improvements  
Davie, FL

**GLF IS A LEADER** IN THE CONSTRUCTION OF MAJOR BRIDGES. PROJECTS RANGING FROM MINOR TO HIGH PROFILE SUCH AS CABLE STAY BRIDGES, SEGMENTAL BRIDGES AND BASCULE BRIDGES ARE OUR SPECIALTIES.





2

**Sidney Lanier Cable Stayed Bridge**  
Brunswick, GA





3

**US-17 Wilmington Bypass**  
Wilmington, NC





**4 // US-17 Wilmington Bypass Main Pier**  
Wilmington, NC

---

**5 // US-17 Wilmington Bypass Bridge**  
Wilmington, NC



GLF is a leader in the construction of major bridges. Projects ranging from minor to high profile such as cable stay bridges, segmental bridges and bascule bridges are our specialties. GLF Construction has completed bridge projects encompassing nearly every classification including cable stay, segmental, steel. Prestressed girder, post-tensioned girder and heavy movable structures.

Our team stays well informed of the latest developments in technology and construction materials, which allow us to both, improve our construction techniques and exceed the project specifications.

GLF utilizes a wide range of computer applications to support our engineering, administration and project management expertise. The latest computer aided design, scheduling and cost control software are just a few of the resources used in the execution of the work. GLF has constructed bridges in some of the most environmentally sensitive areas in the United States including aquatic preserves, mangrove swamps and the flood plains of north Florida.

One of the methods used to protect the environment during construction is the “top down” construction approach whereby all work is performed from the structure being constructed.



**6/7** // Escambia River Bridges  
Escambia County, FL



# PORT & MARINE WORKS

1

**Berth 30 Crane Rail Extension**  
Port Everglades, FL

**GLF CONSTRUCTION CORPORATION HAS** COMPLETED PORT AND MARINE WORKS ALL OVER THE WORLD. CLIENTS INCLUDE FEDERAL, STATE AND LOCAL GOVERNMENTS AS WELL AS THE PRIVATE SECTOR.





**2 // Berth 212**  
Port of Tampa, FL

.....

**3 // Berth 30 Crane Rail Extension**  
Port Everglades, FL



GLF Construction Corporation has completed port and marine works all over the world. Clients include federal, state and local governments as well as the private sector.

The experience represented by GLF personnel encompasses all aspects of marine work including harbors, piers, jetties, bulkhead walls, and sub aqueous pipelines. Specific types of projects include cruise ship and container terminals and fuel, gas and bulk handling facilities.

Working in the marine environment requires specialized expertise and knowledge not involved in work landside. The methods of construction used by the GLF team are the latest developed. Most of our clients projects are unique as such they are benefited by GLF's years of experience coupled with the team's clear vision of what is required for the future.



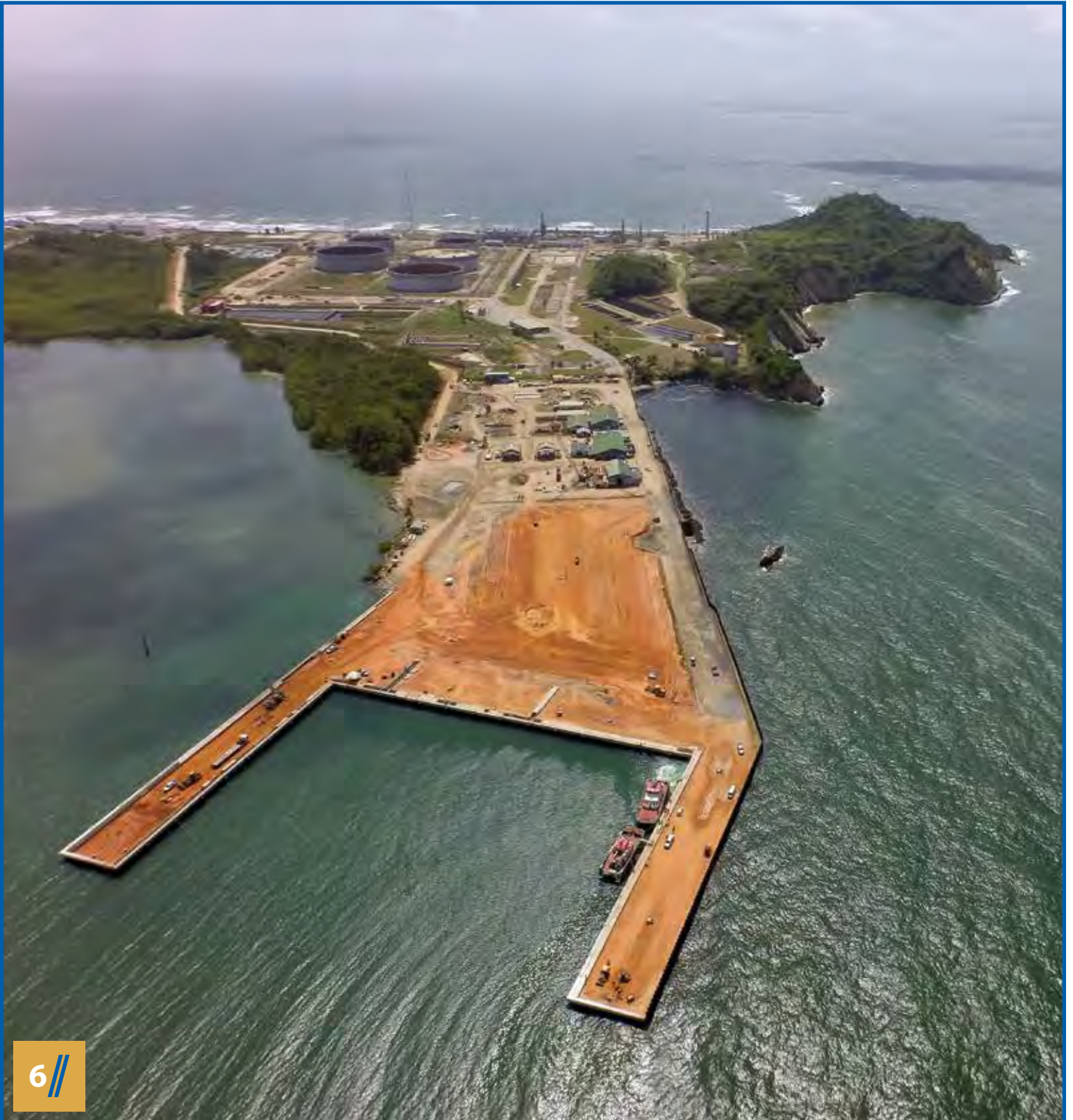
4 //

**4 //** Berth 212 Slab Erection  
Tampa, FL

**5 //** Stock Island Bulkhead Replacement  
Key West, FL



5 //



6 //



8

**Ocean Avenue Bridge over Intracoastal Waterway**  
Lantana, FL







# HEAVY FOUNDATIONS

1 //

**Hallandale Bridge - Bascule Pier Construction**  
Hallandale Beach, FL

**A MAJORITY OF THE** WORK PERFORMED BY GLF HAS INVOLVED HEAVY CIVIL FOUNDATIONS. THE GLF TEAM HAS CONSTRUCTED FOUNDATIONS IN SOME OF THE MOST DIFFICULT ENVIRONMENTS IN THE BUSINESS.





**2 // Seabreeze Bridge Pier 5B**  
Daytona Beach, FL

---

**3 // Berth 212 Pile Driving**  
Tampa, FL

---

**4 // Venetian Causeway Approach and  
Bascule Pier Foundations**  
Miami Beach, FL

---

**5 // Biscayne Bay Bridge Foundation**  
Miami, FL



A majority of the work performed by GLF has involved heavy civil foundations. The GLF team has constructed foundations in some of the most difficult environments in the business. The locations include sites affected by extreme ocean tides, deep waters, large temperature differentials, hurricanes and rivers with swift currents.

Our specialties include caissons, deep coffercells, drilled shafts, concrete and steel piles as well as mass concrete footings and piers. Developing methods to manage the materials, equipment and personnel required to complete these projects is also a GLF trademark.

At GLF we look forward to the challenges of constructing foundations that are out of the ordinary. Based on our experience of driving hundreds of thousands of feet of all types of piles and placing thousands of yards of concrete and millions of pounds of steel GLF can extend to our clients a high level confidence that the project will be completed on time and within budget using the most effective methods possible.



4 //



5 //

# AIRPORTS

1

**Southwest Apron Rehabilitation, BP-1  
at Orlando Sanford International Airport  
Sanford, FL**



**GLF'S AIRPORT DIVISION SPECIALIZES** IN AIRPORT INFRASTRUCTURE PROJECTS. THESE PROJECTS INCLUDE RUNWAY, TAXIWAY, AND APRON CONSTRUCTION. AIRPORT CONSTRUCTION REQUIRES A DETAILED KNOWLEDGE OF FAA SPECIFICATIONS AND PROTOCOL AS WELL AS SPECIALIZED HEAVY EQUIPMENT RESOURCES.





2 //

**2 //** Taxiway B-2 Extension  
Orlando International Airport, FL

**3 //** PBI Signature Flight Support  
West Palm Beach, FL



3 //



**4/5** // Space Coast Regional Airport West Apron Rehabilitation-Expansion  
Titusville, FL



# ROADWORKS

1 //

**Veterans Expressway Widening**  
Tampa, FL



**GLF SERVICES COVER THE BUILDING** OF BOTH NEW AND EXISTING ROADWAYS. OUR CAPABILITIES INCLUDE BUT ARE NOT LIMITED TO EARTHWORK, GRADING, UTILITES, PAVING, MAINTENANCE OF TRAFFIC, SIGNALS AND LIGHTING. GLF PRIDES ITSELF IN MAINTAINING CONVIENCE AND SAFETY TO THE TRAVELING PUBLIC

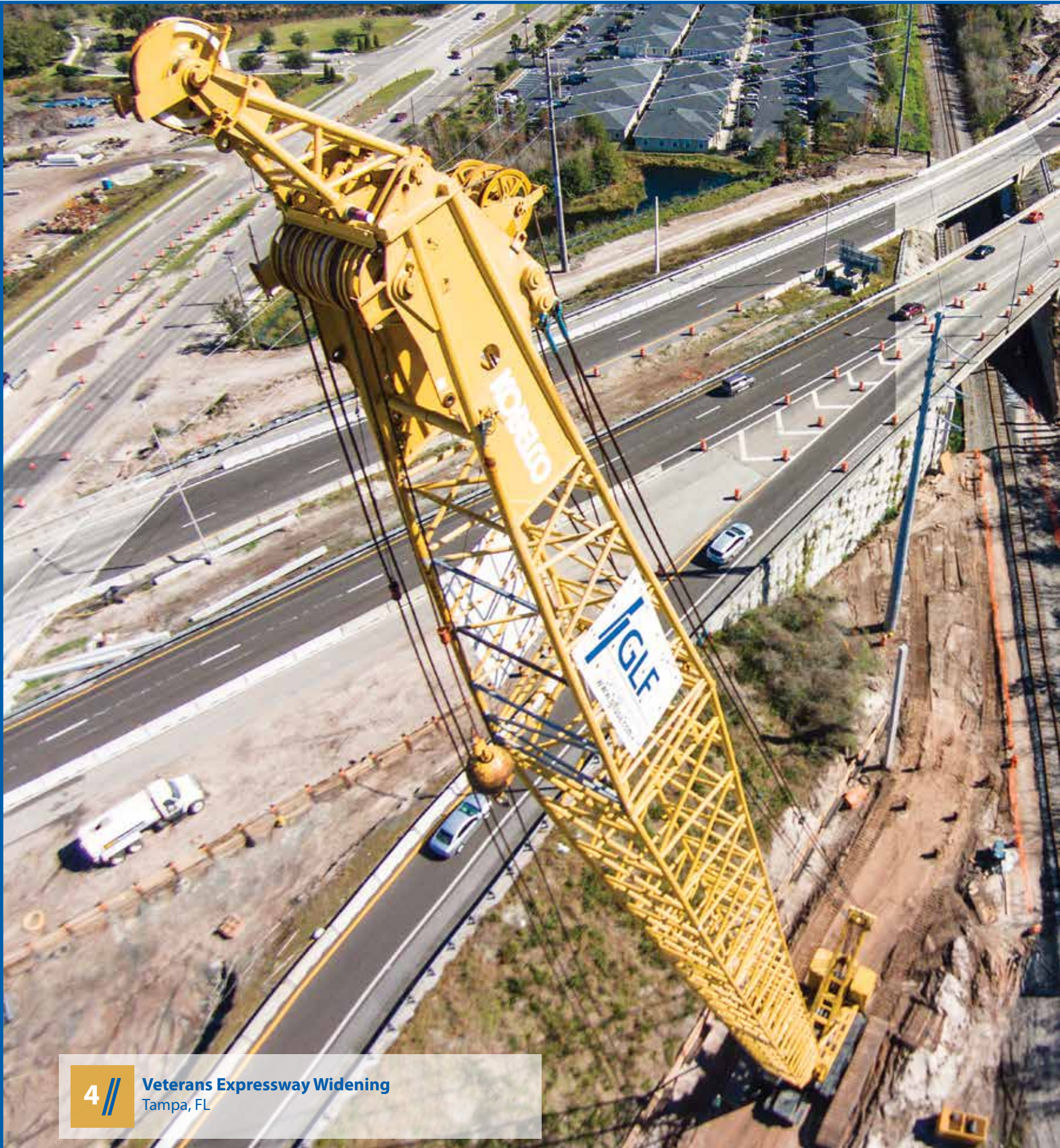






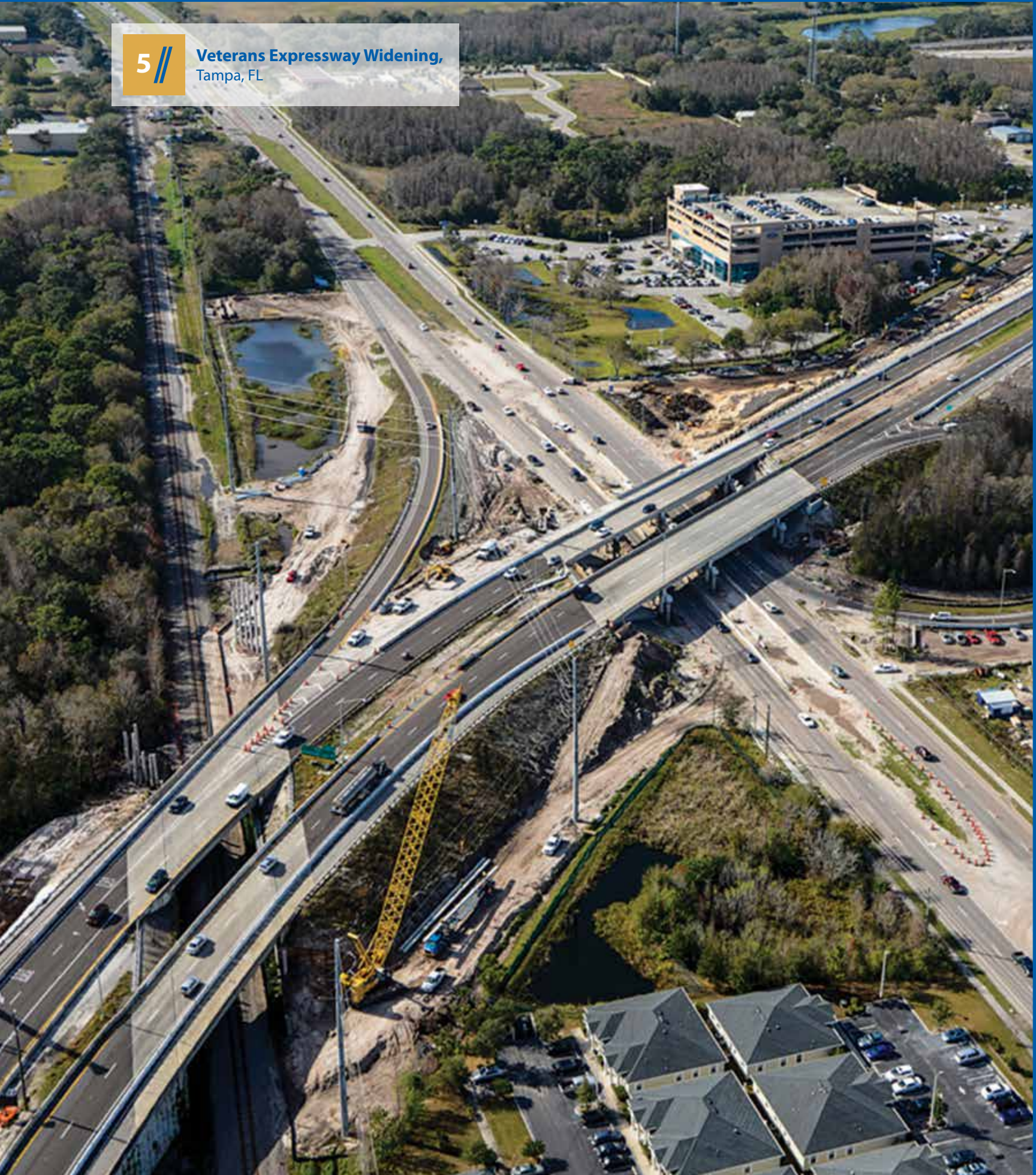
**2/3** // SR-269 Quincy Bypass,  
Quincy, FL

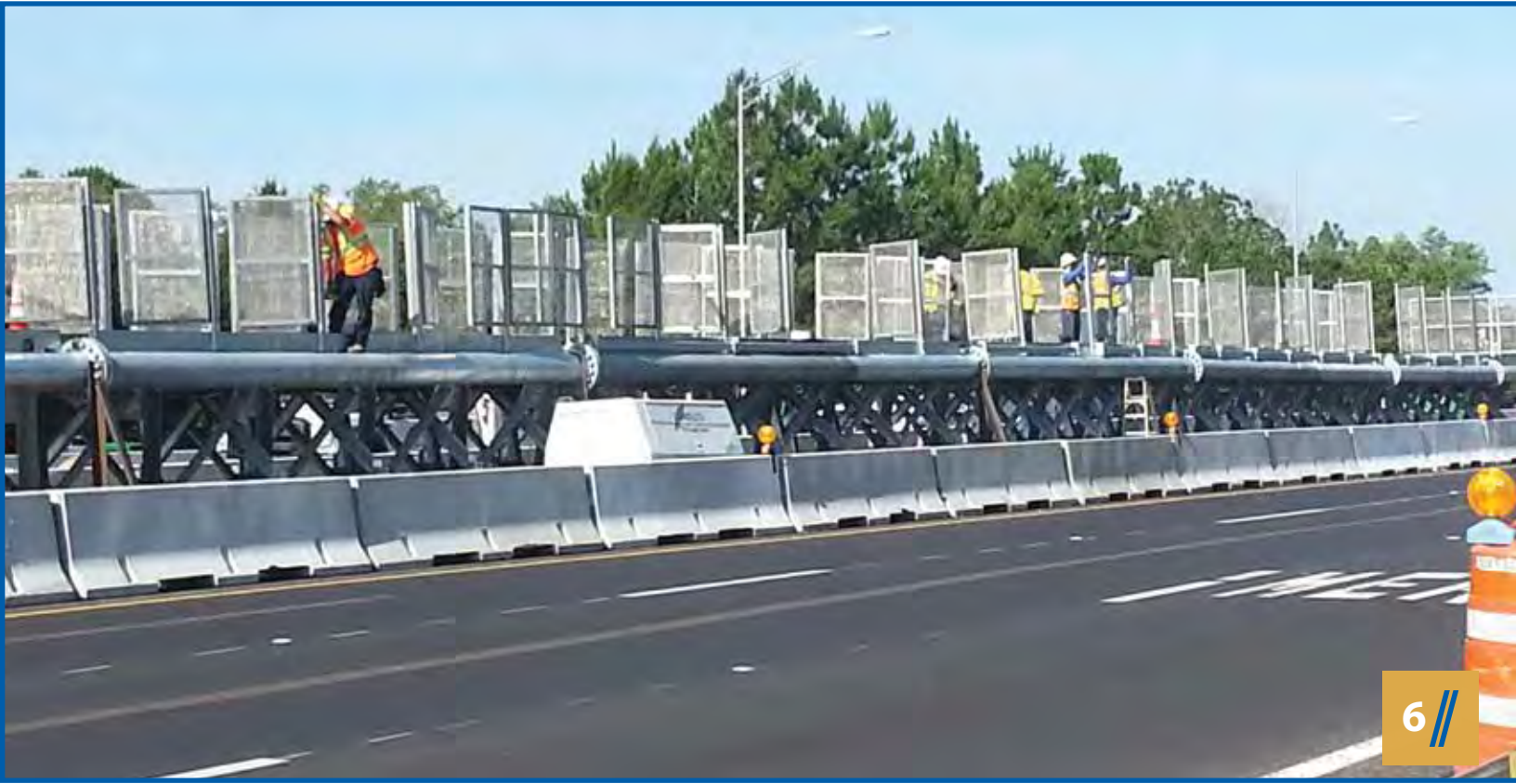




5

**Veterans Expressway Widening,**  
Tampa, FL





6 //

**6/7** // AET Improvements on Veterans Expressway  
Tampa, FL



7 //



# DESIGN BUILD & LIGHT RAIL

1

Miami Intermodal Center  
Miami, FL

**DESIGN-BUILD IS ONE** OF MANY ALTERNATIVE METHODS OF PROJECT DELIVERY. GLF HAS BEEN INVOLVED WITH DESIGN-BUILD PROJECTS FOR MANY YEARS IN EUROPE AND NOW IS FOCUSING ON THE PUBLIC SECTOR DESIGN-BUILD MARKET IN THE UNITED STATES.





**2 // DART - NC3 Project at White Rock Creek**  
Dallas, TX

**3 // MIC Bridge 10A**  
Miami, FL

**4 // DART G-2 Rail**  
Dallas, TX



2 //



3 //



4 //

Design-Build is one of the many alternative methods of project delivery. GLF has been involved with design-build projects for many years in Europe and now is focusing on the emerging public sector design build market in the United States. Major projects performed by GLF include high-speed rail, light rail, harbor works, bridges and commercial buildings.

The benefits of the design-build method of delivery for the client include single source accountability and responsibility, timesavings, costs savings, improved risk management, quality and less management or coordination required by the owner.

GLF takes an integrated approach to its design-build projects by supplying its own in-house expertise of construction managers, estimating and engineers and teaming them with the most reputable design-build consultants in the world.

Light-rail construction is another area of construction that requires a special team approach to the projects. Typically construction is spread over miles of terrain, in urban and rural settings requiring expert coordination and proven methods of construction in order to meet important mile-stones and tight schedules.





5 //

**5/6 //** New River Bridge

Ft. Lauderdale, FL



6 //

# STRUCTURAL & HISTORICAL RENOVATION / ENVIRONMENTAL

1 //

**Venetian Causeway Bridge**  
Miami Beach, FL



**STRUCTURAL CONCRETE RESTORATION AND** REPAIRS ARE COMPLEX PROCESSES PRESENTING UNIQUE CHALLENGES VERY DIFFERENT FROM THE FIELD OF NEW CONCRETE CONSTRUCTION.



**2 // Venetian Causeway Bridge Historical Reconstruction/Renovation Project**  
Miami Beach, FL

.....

**3 // Temple of Philae Rescue/Restoration**  
Egypt



Structural concrete restoration and repairs are complex processes presenting unique challenges very different from the field of new concrete construction. Historical restoration may involve either the construction of a new structure replicating the historical structure or the complete renovation of an existing structure.

Often times the projects are located in harsh and aggressive marine environments requiring an integration of new materials with old materials to form a new composite structure. GLF has completed several restoration projects that required a process of analyzing the original design and construction to select the most suitable repair techniques and materials.

Environmentally sensitive projects are some of the most challenging and rewarding projects taken on by the GLF team. Projects have been completed in some of the most environmentally sensitive areas in the United States including aquatic preserves, mangrove swamps and the flood plains of north Florida.

One of the methods used to protect the environment during construction is the “top down” construction approach whereby all work is performed from the structure being constructed so as not to impact the existing terrain.



4 //

**4 //** Construction of Victory Bridge Across Sensitive Flood Plains  
Sneads, FL

**5 //** Setting Historical Arch Girders  
Venetian Causeway Bridge, Miami FL



5 //



# GENERAL CONTRACTING

1

**3600 South Ocean Palm Condominiums**  
South Palm Beach, FL

**GENERAL CONTRACTING REQUIRES THAT** A CONSTRUCTION ORGANIZATION POSSESS THE NECESSARY EXPERIENCE IN ALL PHASES OF CONSTRUCTION AND THE ABILITY TO UTILIZE DIVERSE PROJECT TEAMS EFFECTIVELY.





**2 // Park Grove Apartments**  
Hollywood, FL

---

**3 // Royal Lexington Apartments**  
Lexington, KY

---

**4 // Middle School CC**  
Ft. Pierce, FL



General Contracting requires that a construction organization possess the necessary experience in all phases of construction and the ability to utilize diverse project teams effectively. A detailed working knowledge of the architectural, mechanical, electrical, structural, sitework and utilities aspects of the project is essential.

At GLF the process begins with a thorough evaluation of the project by identifying potential problems, associated risks and any impediments to a successful project. A careful planning and staging process is employed to best utilize all resources allocated to a project.

GLF has completed many diverse general contracting projects including but not limited to commercial and residential buildings, condominiums, industrial facilities, machinery installations and roadway and utility projects.





5 //

**5/6** // Volcano di Nola Super Center, Designed By Renowned Architect Renzo Piano  
Naples, Italy



6 //

# INTERNATIONAL

1

**Venice Lagoon Protection & Restoration**  
City of Venice, Italy

**GRANDI LAVORI FINCOSIT SpA** OF ROME ITALY, ESTABLISHED IN 1905, HAS SUCCESSFULLY COMPLETED CONSTRUCTION OF MANY LARGE PUBLIC AND PRIVATE WORKS PROJECTS ALL OVER THE WORLD.



**2 // Port of Savona**  
Savona, Italy

**3 // Ponte Alta Velocità Sul Fiume Pò**  
Milan-Bologna, Italy

**4 // Port of Bari**  
Bari, Italy



Grandi Lavori Fincosit SpA of Rome Italy, established in 1905, has successfully completed construction of many large public and private works projects all over the world. Locations include Europe, Africa, the Middle East, Russia, North and South America and the Philippines. The scope of the projects has included marine works, bridges, dams, airports, buildings, tunnels, highways, railways, hydroelectric and thermoelectric power plants.

Current major projects include the design and construction of the High Speed Railway Milano to Bologna Italy, construction of the Umiray-Angat Transbasin Tunnel in Manilla the Philippines, the city of Venice Italy Flood

Protection Project, and the Rome Harbor Project. The high speed rail project also includes construction of a major cable stay bridge. The GLF tradition, which started over 100 years ago will continue into the next century. The Team, the good client relations, the quality, the on-time delivery, the technical innovations and the GLF integrity are the basic qualities necessary to succeed in today's market place. GLF will be there.

# IT'S ABOUT THE PEOPLE



**GLF Construction Corporation** recognizes that as the company continues to be successful in the next century we will need to rely on the strong foundation built on the first century of business, but just as importantly, is the next generation of GLF Team members for they are the company's most important assets.







**Brickell Bay View Center**  
80 South West 8th Street  
Suite 2201  
Miami, Florida 33130 U.S.A.

Tel: 305-371-5228  
Fax: 305-371-9201  
[www.glfusa.com](http://www.glfusa.com)

**A wholly owned subsidiary of  
GRANDI LAVORI FINCOSIT SpA**